



# メタコプリーツネット® きゃたぴら網戸タンデム Metaco Pleat Net Caterpillar Tandem

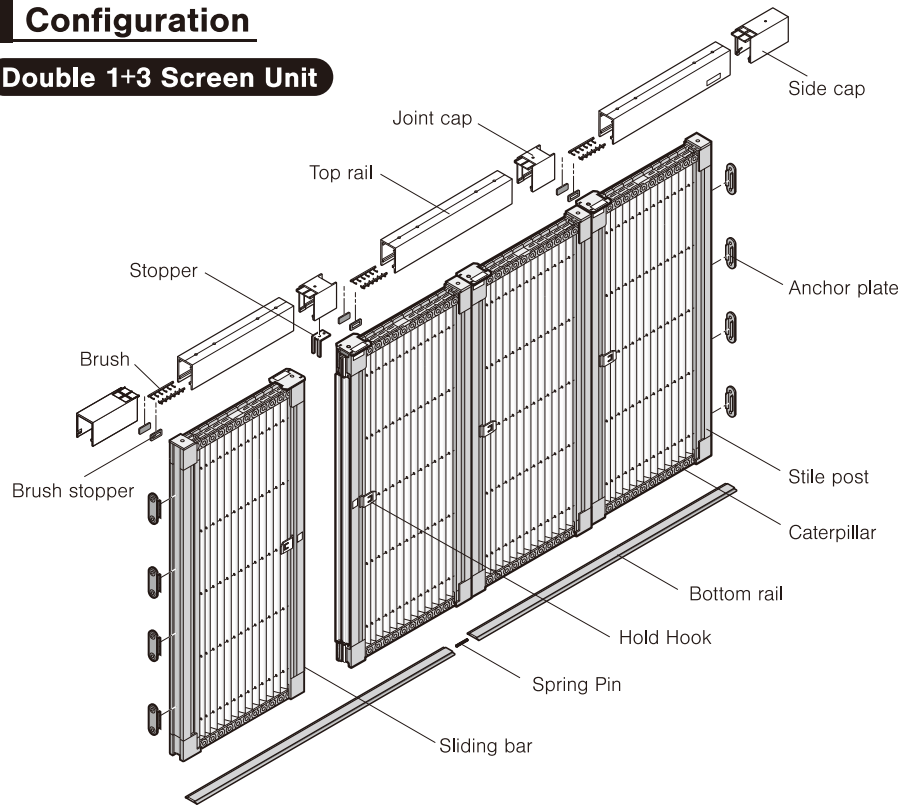
Double **1+3** **2+3**

## Installation manual

MTCT4E01

### Configuration

#### Double 1+3 Screen Unit



Thank you for purchasing Metaco Pleat Net Caterpillar Tandem.

Please read this instruction manual thoroughly before installing the product and keep this manual for future reference.

### SAFETY CAUTION

For your own safety and damage to the property, this manual uses following symbols and indications. Please take a close attention and read the definition of each signs.

■ Failure to follow the operation may result in following.



#### Warning

Improper use may result in death or serious personal injury.



#### Caution

Improper use may result in personal injury or property damage.

■ Other symbols used in this manuals are defined as below.



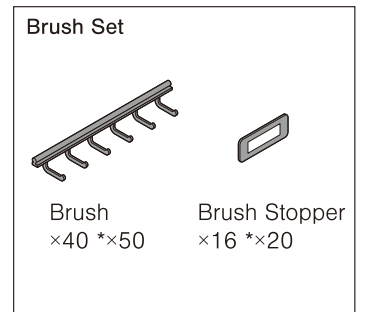
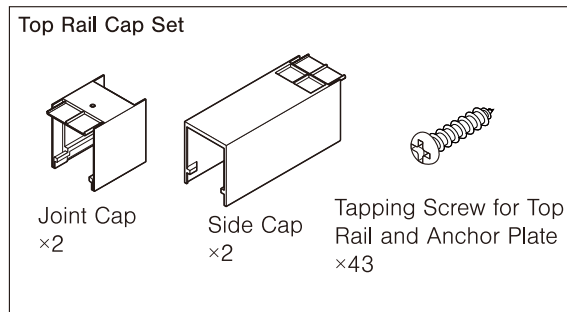
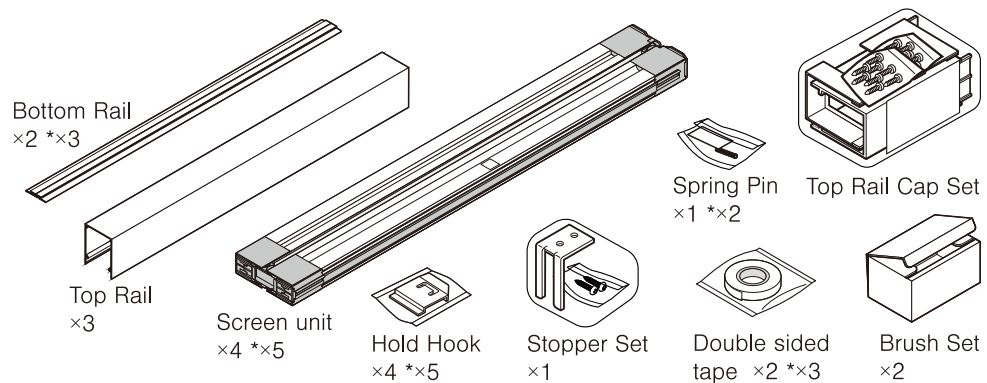
You are not allowed to operate in described condition.



You must follow and operate as instructed.

### Packing Details

Check if all parts are included.



\*For 2+3 Screen unit

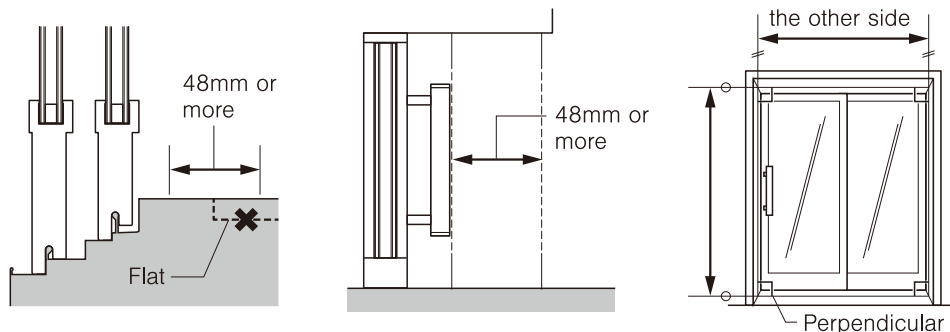
## Installation

### 1 Before installation

#### Check the installing location

Before attaching the unit, check and confirm the measurement of installing location.

1. There should be no step or height difference on place installing.
2. Make sure that door knob, handle, closer do not interfere the screen door.
3. Installing location opening must be parallel and perpendicular.



#### Clean all four sides and corners before installing the unit

Wipe away all oil residue, dust, water, sand and mud from the installation surface and the floor and then wipe these surfaces with a dry cloth to ensure that the product is installed properly.



Caution



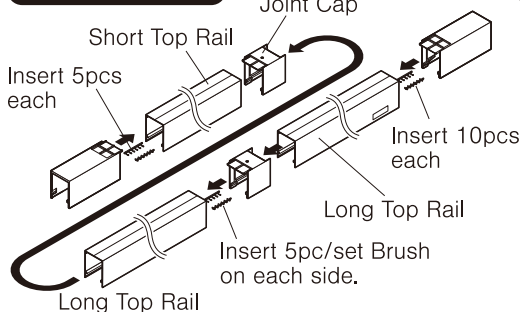
#### Always wear working gloves during installation.

You may have a puncture wounds and cuts from aluminum profile edge without gloves.

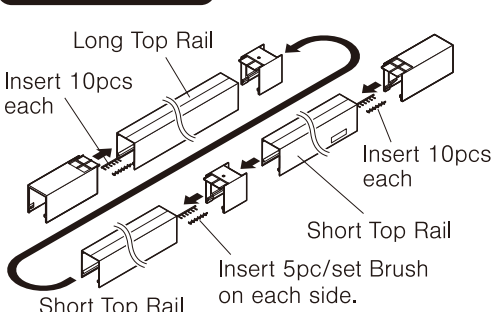
### 2 Top Rail

1. Insert the Brush inside the slit of Top Rail in 5pcs/set.
2. As shown in below, set the Side Cap on both ends of Top Rail. Use the Joint Cap to connect the two Top Rails.

#### 1+3 Screen unit



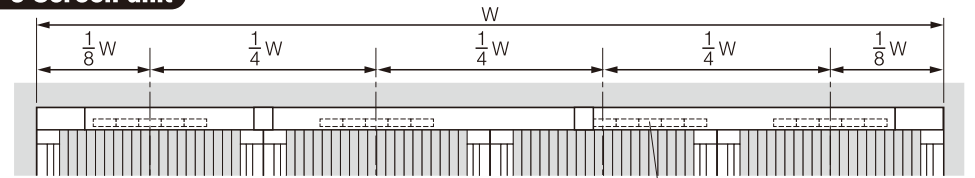
#### 2+3 Screen unit



3. Adjust the position of Brush.

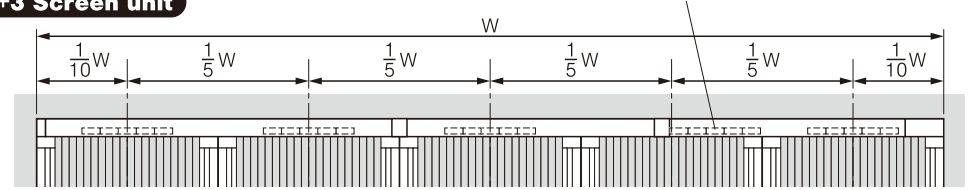
Place the Brush at the center of screen unit. Set 5pcs of Brush side by side on each side. See below image for the position of brushes.

#### 1+3 Screen unit

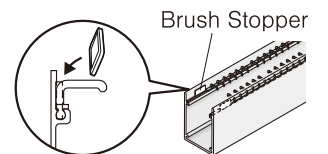


#### 2+3 Screen unit

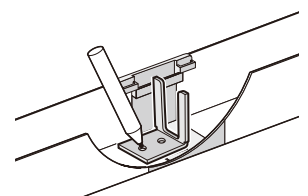
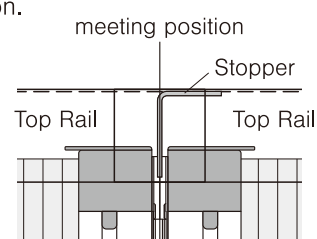
In case the Joint Cap is in the way, place the Brush right beside it.



4. Place Brush Stopper at end of each 5pc/set.



5. Create screw fixing holes at the center of Top Rail.
6. Place the Stopper inside the Top Rail where the screen contacts and mark the drilling position.

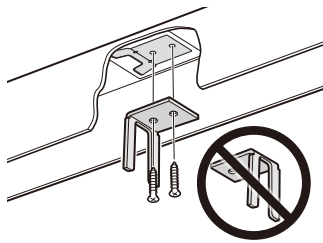


7. Use the double sided tape to position the Top Rail before fixing with screw.
8. Use the Tapping Screw to fix the Top Rail and Side Cap. Do not tighten too hard. It may deform the Top Rail.

continued on back page →

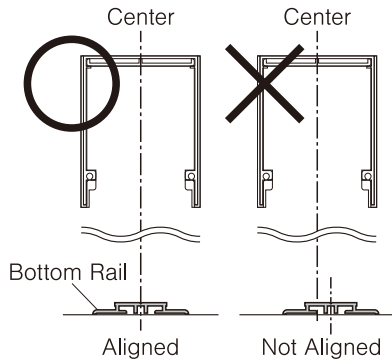
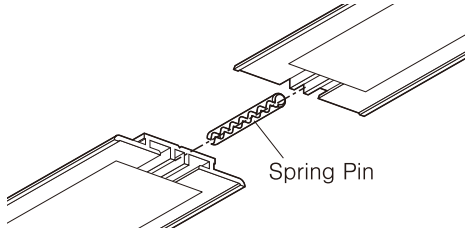
### 3 Stopper

Stopper is required for double door specification. Attach the stopper at the center of Top Rail where you will see a sticker for indication. Fix it with screws.

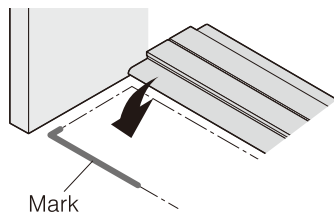
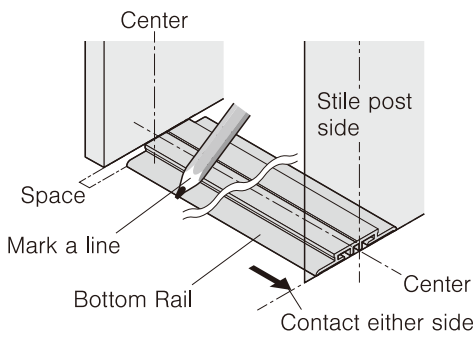


### 4 Bottom Rail

1. Align the center line of Top Rail, Stop Post and Bottom Rail. If the center line is not aligned straight it may affect the operation of product.
2. Use the Spring Pin to connect two or three Bottom Rail. Insert where the contacts.



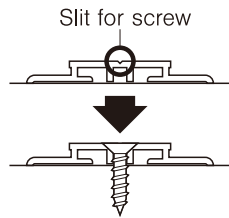
3. Place the Bottom Rail to the retracting side and mark a line to align. Set the Bottom Rail on either one of retracting side and align with the center.
4. Peel the double sided tape and press it against the floor.



#### ■To fix the Bottom Rail with screw

In case the double sided tape does not work, use a screw to fix the rail. Use the slit of the rail as a center position to fix with a screw.

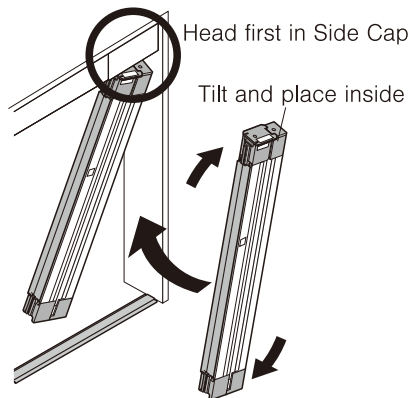
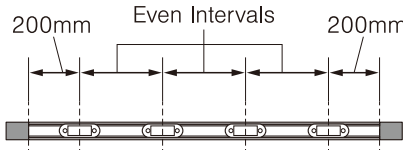
\*Screws for Bottom Rail are not included.



### 5-A Anchor Plate

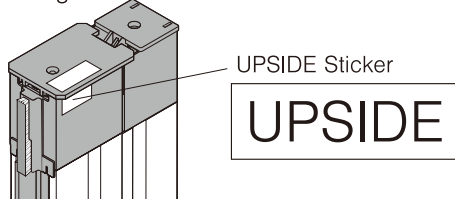
Check "**5-B When installing on wallpaper**" in case you have a wallpaper on frame.

1. Check the position of Anchor Plates at the back of main unit. As shown on right, leave 200mm from the sides and the rest will have even intervals.
2. Peel off the double sided tape on back of Anchor Plate.
3. Tilt the head of the unit to place inside the Side Cap then place the bottom of the unit on the Bottom Rail.

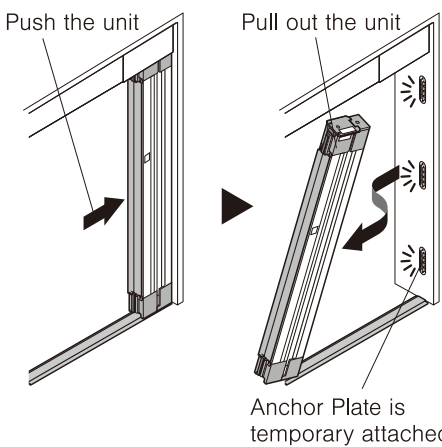


#### POINT

Check upside of the unit with the sticker. UPSIDE sticker is located at the top of sliding bar.

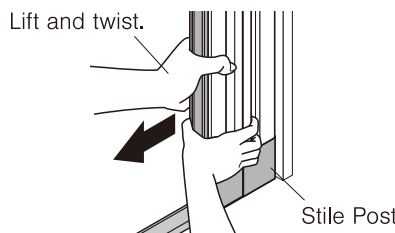


4. Push the unit to the side frame so the double sided tape on Anchor Plate is temporary fixed.
5. Pull out the main unit. Anchor Plates will remain at the wall.



#### POINT

Lift the main unit little from the ground and give a twist while pulling it.

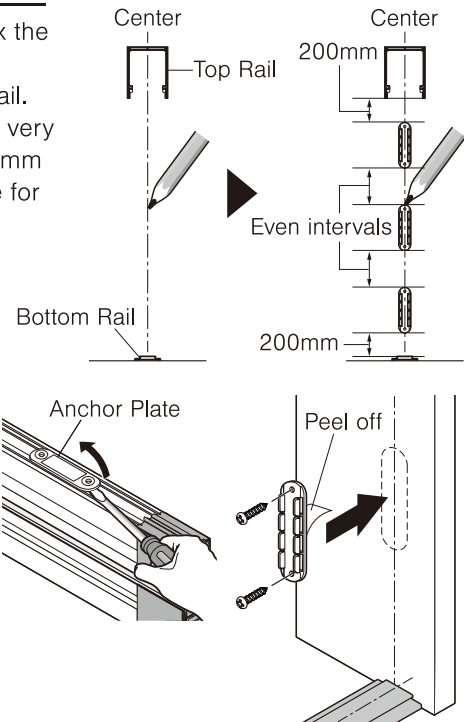


6. Fix the Anchor Plates with tapping screws. Do not tighten the screws more than necessary as it may break the Anchor Plates.

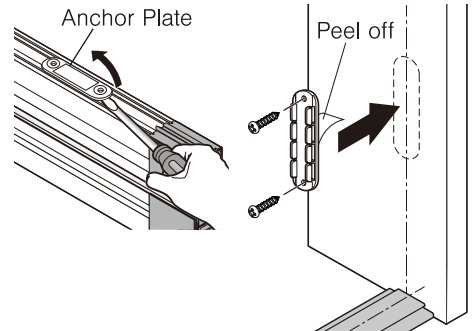
### 5-B When installing on wallpaper

Follow below instruction when you cannot pre-fix the Anchor Plates.

1. Mark a center line between Top and Bottom Rail.
2. Mark the fixing position of Anchor Plates. The very top and bottom Anchor Plates must have 200mm from Top and Bottom Rail. See the right figure for your understanding.

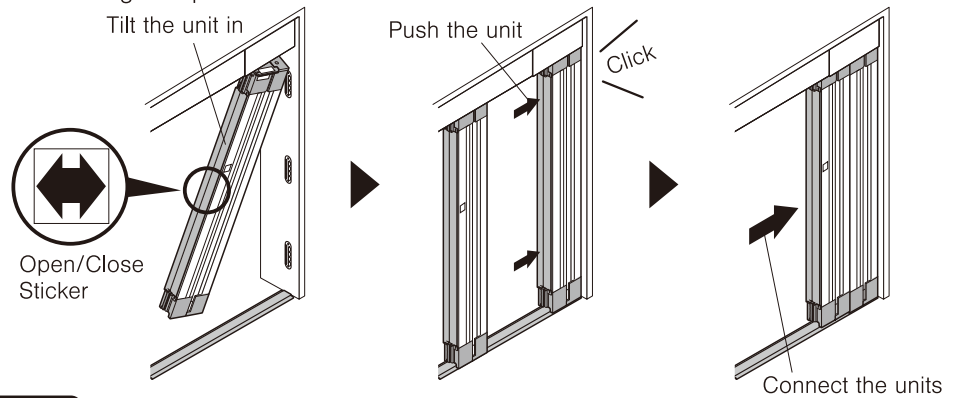


3. Use a flat headed screwdriver to take out the Anchor Plates from the main unit.
4. Peel off the double sided tape and temporary attach the Anchor Plate and fix it with tapping screws. Anchor Plate is attached on the back of Stile Post. You can pull it off with flat head screwdriver.



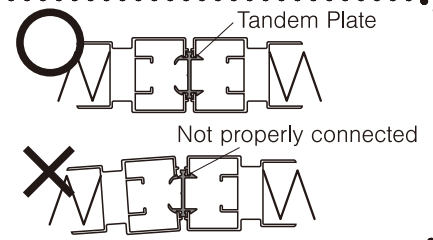
### 6 Attach the unit

1. Tilt the head of the unit to place inside the Side Cap then place the bottom of the unit on the Bottom Rail.
2. Press back the main unit to the Anchor Plate until you hear a click sound. Proceed the same with other side for double door specification.
3. Connect 2 Screen units or more. Form an angle to join the profiles and begin by connecting one portion of the section.



#### POINT

Make sure and confirm two or more units are connected properly. Check from both sides. See the right image for better understanding of proper connection.

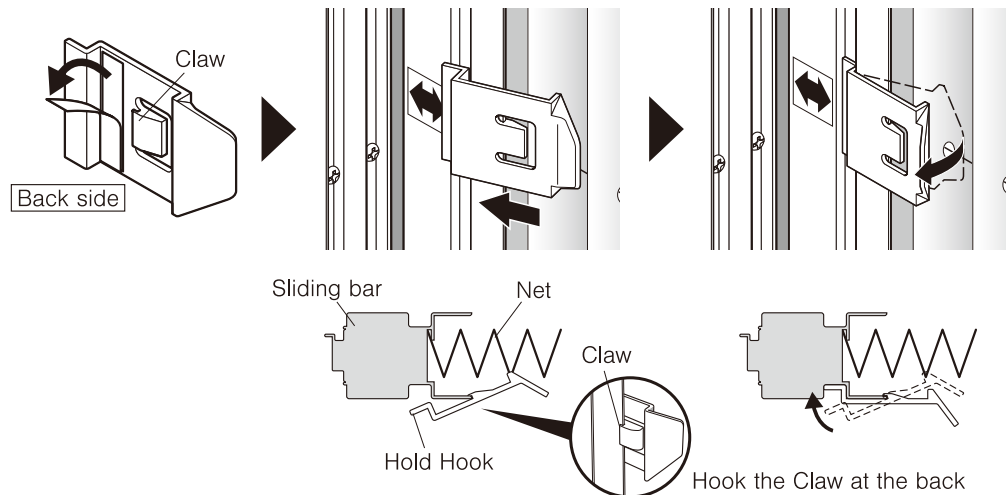


#### NOTICE

Open and close the unit after installation and make sure it does not come off.

### 7 Hold Hook

1. Peer off the double sided tape on back of Hold Hook.
2. Push in the Hold Hook to the Sliding Bar by first hooking the Claw. Place it at a position where you can easily operate the opening and closing.



### 8 Inspection after installation

Check the movement of the product after installation.

1. Confirm the movement by opening and closing the screen several times.
2. Confirm the Top and Bottom Rail are installed correctly.
3. Confirm if there are no damage to the aluminum profiles.
4. Confirm if Stile Post and Anchor Plate is connected properly.
5. Confirm if there are any gap between sliding bar and stop post when closed.



Caution



**Do not operate the product when the product is broken or not properly installed.**

Product may come off and may result in a fall accident.