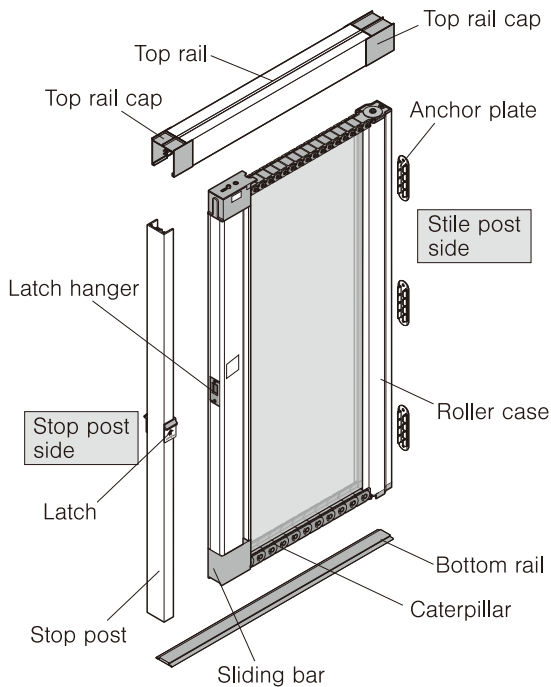


Configuration



Thank you for purchasing Metaco Roller Net Tenpooh. Please read this instruction manual thoroughly before installing the product and keep this manual for future reference.

©METACO Inc.

SAFETY CAUTION

For your own safety and damage to the property, this manual uses following symbols and indications. Please take a close attention and read the definition of each signs.

■ Failure to follow the operation may result in following.

Warning

Improper use may result in death or serious personal injury.

Caution

Improper use may result in personal injury or property damage.

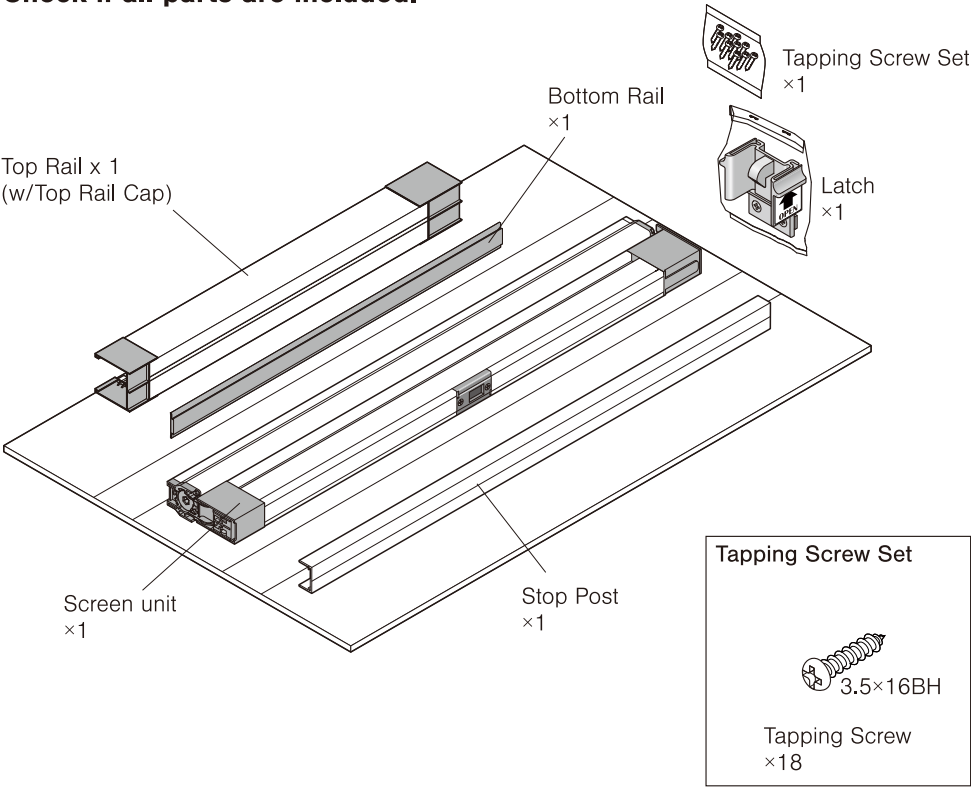
■ Other symbols used in this manuals are defined as below.

You are not allowed to operate in described condition.

You must follow and operate as instructed.

Packing Details

Check if all parts are included.



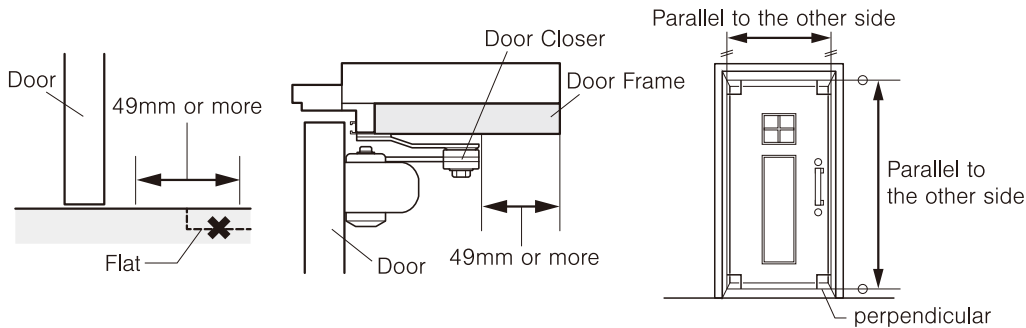
Installation

1 Before installation

■Check the installing location

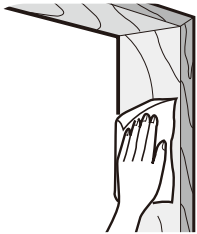
Before attaching the unit, check and confirm the measurement of installing location.

- There should be no step or height difference on place installing.
- Make sure that door knob, handle, closer do not interfere the screen door.
- Installing location opening must be parallel and perpendicular.



■Clean all four sides and corners before installing the unit

Wipe away all oil residue, dust, water, sand and mud from the installation surface and the floor and then wipe these surfaces with a dry cloth to ensure that the product is installed properly.



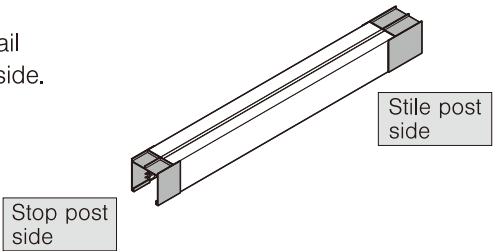
Caution

Always wear working gloves during installation.

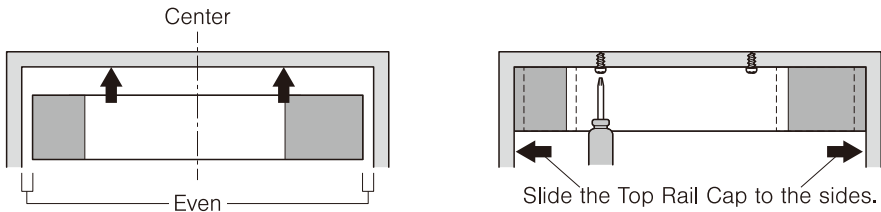
You may have a puncture wounds and cuts from aluminum profile edge without gloves.

2 Top Rail

- Place Top Rail Caps on both ends of Top Rail ensuring larger size cap is at the Stile Post side.

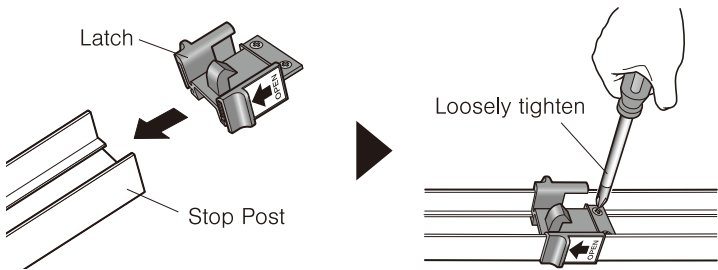


- Please stick it on the ceiling of the frame temporarily and make space almost equal on both edges.
- Fix the Top Rail with the tapping screws. Do not fix the tapping screw too strong.
- Slide the Top Rail Cap to the sides of frame.



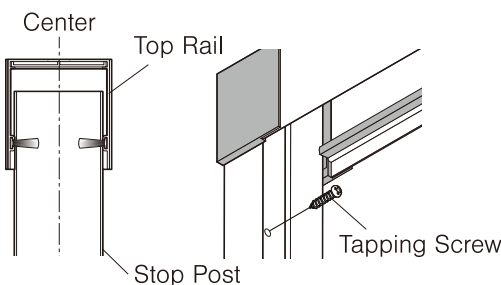
3 Pre-fix the Latch.

Slide the latch into the stop post. Temporary fix the latch at the center.



4 Stop Post

- Place the Stop Post, so that the bottom will contact the floor. Center of Top Rail and Stop Post must be aligned before fixing with tapping screws.
- Confirm once again if the center is aligned.

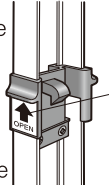


POINT

Determine the upside-down position by locating the arrow placed on the latch.

Upside

Lowside

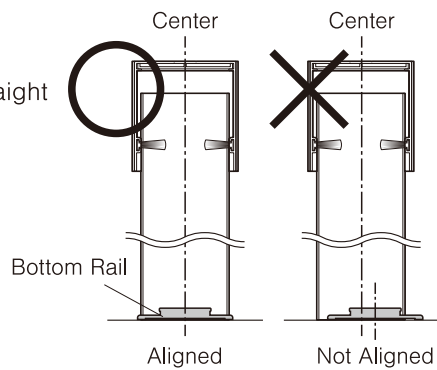


OPEN

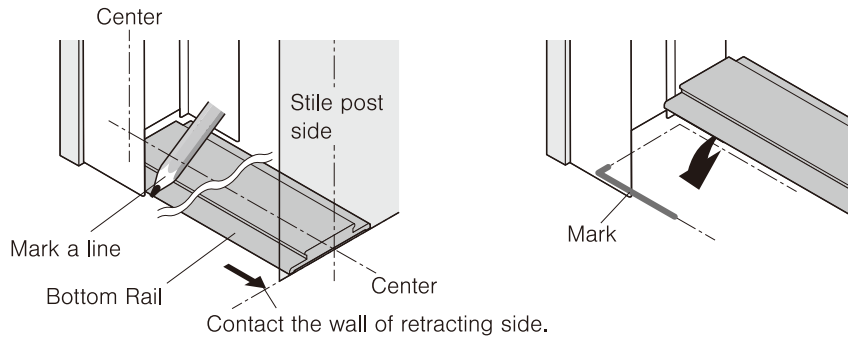
continued on back page →

5 Bottom Rail

1. Align the center line of Top Rail, Stop Post and Bottom Rail. If the center line is not aligned straight it may affect the operation of product.



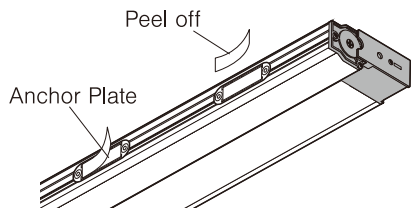
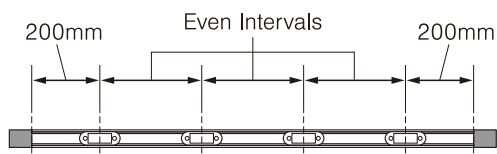
2. Place the Bottom Rail to the retracting side and marked a line to align. There will be a space between the Stop Post and Bottom Rail.
3. Peel the double sided tape and press it against the floor.



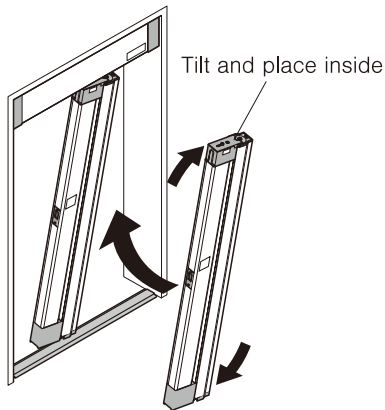
6-A Anchor Plate

Check " **6-B When installing on wallpaper** " in case you have a wallpaper on frame.

1. Check the position of Anchor Plates at the back of main unit.
As shown below, leave 200mm from the sides and the rest will have even intervals.
2. Peel off the double sided tape on back of Anchor Plate.

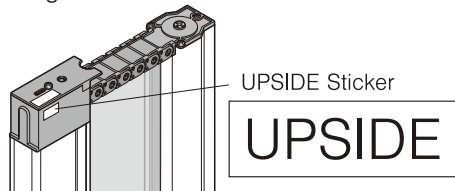


3. Tilt the unit and place it between the top and bottom rail.

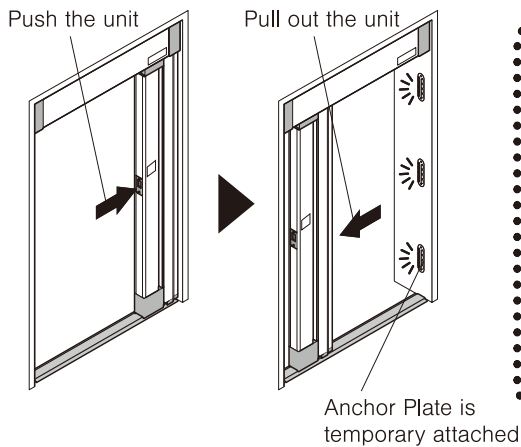


POINT

Check upside of the unit with the sticker. UPSIDE sticker is located at the top of sliding bar.

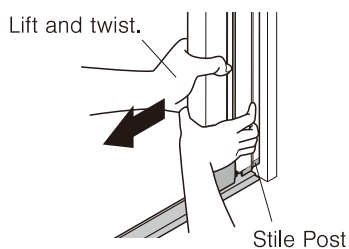


4. Push the unit to the side frame so the double sided tape on Anchor Plate is temporary fixed.
5. Pull out the main unit. Anchor Plates will remain at the wall.

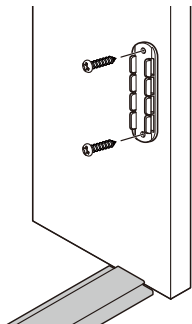


POINT

Lift the main unit little from the ground and give a twist while pulling it.



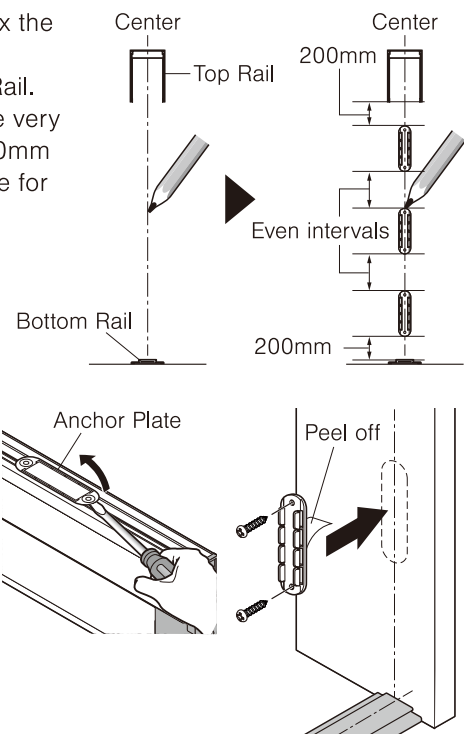
6. Fix the Anchor Plates with tapping screws. Do not tighten the screws more than necessary as it may break the Anchor Plates.



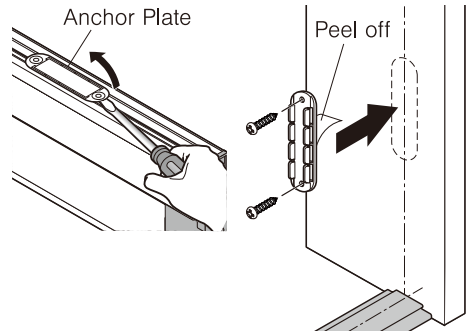
6-B When installing on wallpaper

Follow below instruction when you cannot pre-fix the Anchor Plates.

1. Mark a center line between Top and Bottom Rail.
2. Mark the fixing position of Anchor Plates. The very top and bottom Anchor Plates must have 200mm from Top and Bottom Rail. See the right figure for your understanding.

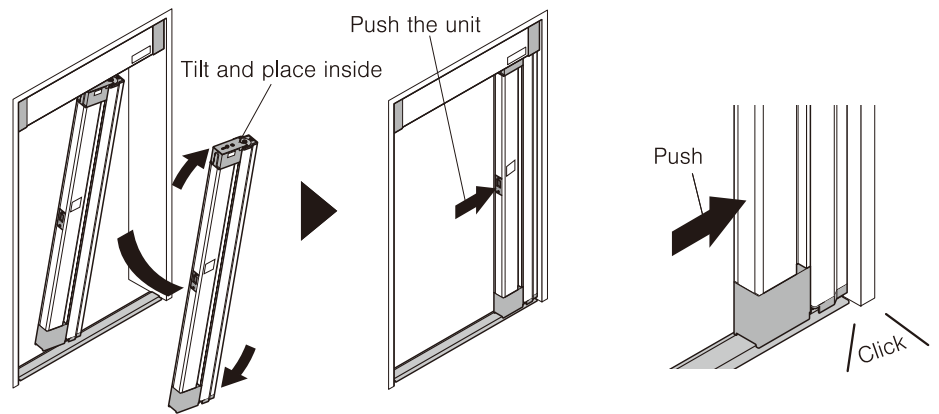


3. Use a flat headed screwdriver to take out the Anchor Plates from the main unit.
4. Peel off the double sided tape and temporary attach the Anchor Plate and fix it with tapping screws.
Anchor Plate is attached on the back of Stile Post. You can pull it off with flat head screwdriver.



7 Attach the unit

1. Tilt the unit and place it between the top and bottom rail.
2. Press back the main unit to the Anchor Plate until you hear a click sound.

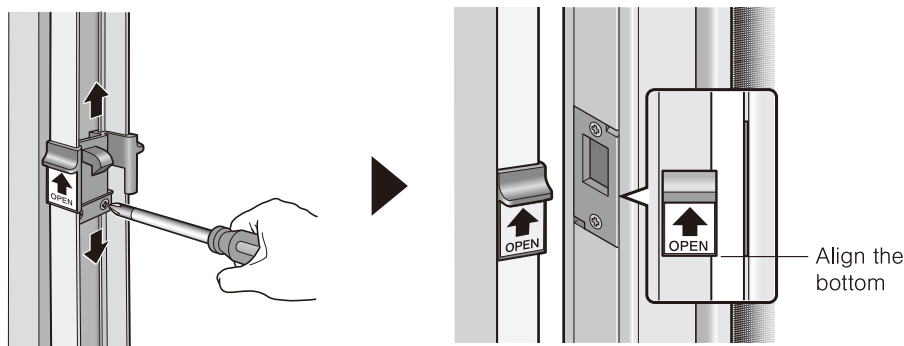


NOTICE

Open and close the unit after installation and make sure it does not come off.

8 Latch Adjustment

1. Untight the latch on the stop post and adjust the position.
2. Adjust the latch position by aligning the bottom of latch and latch hanger.
3. Make sure that latch is vertical to the stop post before fixing.



NOTICE

Confirm whether the latch is hooked to the latch hanger and secured.

9 Inspection after installation

Check the movement of the product after installation.

1. Confirm the movement by opening and closing the screen several times.
2. Confirm the Top and Bottom Rail are installed correctly.
3. Confirm if there are no damage to the aluminum profiles.
4. Confirm if Stile Post and Anchor Plate is connected properly.
5. Confirm if there are any gap between sliding bar and stop post when closed.



Caution



Do not operate the product when the product is broken or not properly installed.

Product may come off and may result in a fall accident.